

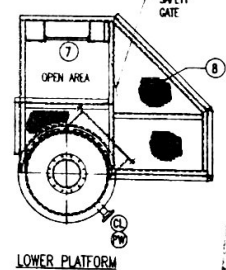
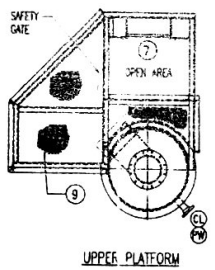
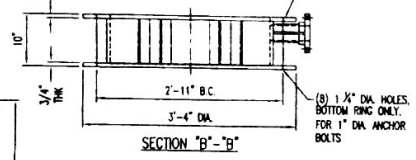
FURNISH AS SUBMITTED REVISE AND RESUBMIT
 REJECTED SUBMIT SPECIFIED ITEM
 FURNISH AS CORRECTED

Corrections or comments made on the shop drawings during this review do not relieve supplier from compliance with requirements of the drawings and specifications. This check is only for review of general compliance with the design concept of the project and general compliance with the information given in the contract documents. The supplier is responsible for: Confirming and correlating all quantities and dimensions; selecting fabrication processes and techniques of construction; coordinating his work with that of all other trades; and performing his work in a safe and satisfactory manner.

LITCO INC.
 MEMPHIS, TN
 Date: 4/19/07 By: *John Schley*

ITEM	REQ'D	INCHES	SERVICE	FLANGE DRILLING CONNECTION TYPE	PROJECTION	POSITION
N-0	1	10" ROUND	OUTLET	FRP PLATE FLANGE	3"	VERT
N-1	1	6" x 12"	INLET	FRP PLATE FLANGE	6"	270°
DR	1	3" DIA	DRAIN	150# FLANGE	8"	180°
OC	1	3" DIA	OVER FLOW	150# FLANGE	8"	180°
D-1	1	24" DIA	MAINWAY W/1/2" LEXAN COVER	FRP FLG. W/ 1/2" CLEAR LEXAN COVER	6"	45°
D-2	1	12" DIA	MAINWAY W/1/2" LEXAN COVER	FRP FLG. W/ 1/2" CLEAR LEXAN COVER	6"	45°
D-3	1	24" DIA	MAINWAY W/1/2" LEXAN COVER	FRP FLG. W/ 1/2" CLEAR LEXAN COVER	6"	45°
D-4	1	12" x 12"	MAINWAY W/1/2" LEXAN COVER	FRP FLG. W/ 1/2" CLEAR LEXAN COVER	6"	315°
PM	1	2" DIA	PACKING SPRAY WATER	150# FLANGE	7"	135°
CL	1	2" DIA	DEMISTER CLEAN WATER	150# FLANGE	7"	135°
PI	1	1" DIA	DIFF. PRESSURE INDICATOR 1 PORT	150# FLG. W/ BLIND FLG.	7"	270°
PI	1	1" DIA	DIFF. PRESSURE INDICATOR 2 PORT	150# FLG. W/ BLIND FLG.	7"	90°
L1	1	3" DIA	LEVEL	150# FLANGE	6"	90°
L2	1	3" DIA	LEVEL	150# FLANGE	6"	90°

ITEM	REQ'D	DESCRIPTION	QUANTITY	UNIT
1	1	PACKED TOWER ASSEMBLY	1	UNIT
2	1	PACKING 15'-0" HIGH	1	TRAY
3	1	PACKING SPRAY NOZZLES	1	TRAY
4	1	DEMISTER CLEAN NOZZLES	1	TRAY
5	1	DEMISTER MESH PAD	1	TRAY
6	1	TOWER SUPPORT RING	1	TRAY
7	1	LADDY	1	CALVANIZED C.S.
8	1	LOWER PLATFORM	1	CALVANIZED C.S.
9	1	UPPER PLATFORM	1	CALVANIZED C.S.



MAX. LOAD ON ONE SUPPORT		
FORCE		
LOAD	VERTICAL	LATERAL
DEAD (LBS)	430	—
WIND (LBS)	±1250	±200
SEISMIC (LBS)	±160	±270
LIVE (LBS)	1,900	—
MAX. LOAD (LBS)	6740	470

CONSTRUCTIONS
 1) MESH: METRON 822 PREMIUM GRADE VINYL ESTER RESIN WITH INTERLOCK DRAIN AND CORN TOP UNLESS OTHERWISE NOTED THICKNESS SHALL 1/4", BOTTOM 5/16"
 2) PACKING: 4" O-PAC POLYPROPYLENE

DESIGN DATA
 INLET AIR FLOW: 1,001 ACFM
 TEMPERATURE: 141° F
 PRESSURE: ATMOSPHERIC
 INLET ETHANOL CONTENT: 12.8% IN 1.535 LB/M CO2 + 1587 LB/M AIR + 348 LB/M CO2
 INLET METHANOL CONTENT: 3.172 LB/M
 INLET CHLORINE CONTENT: 2.48 LB/M
 INLET FORMALDEHYDE: 2.48 LB/M
 INLET GAS: 100% IN CO2 + N2 + O2
 INLET HUMIDITY: 833 LB/M AIR
 WINDER RATE: 5 SPANDED PSI
 PACKING SPRAY: 50 SPANDED PSI
 DEMISTER SPRAY: 5 SPANDED PSI

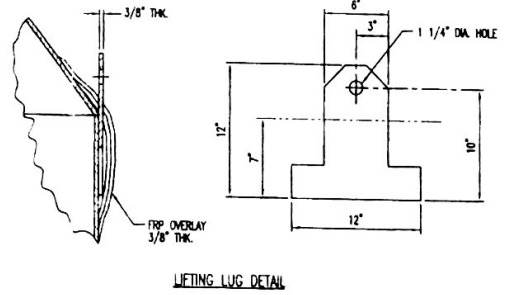
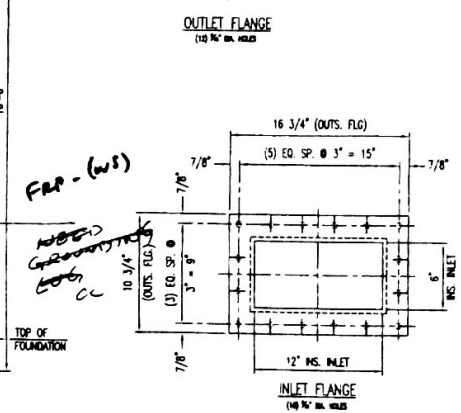
APPROXIMATE WEIGHTS
 SHIPPING WEIGHT EMPTY: 6,800 LBS/UNIT
 PACKING WEIGHT: 310 LB

NOTES
 1) ALL FLANGES TO BE 150# DRILLING HOLES TO STANDARD SPECIFICATIONS.
 2) FABRICATOR TO SUPPLY ALL NEUTRINE GASKETS AND SEISM BELTS & NETS AS REQUIRED.
 3) ALL EXTERNAL PIPES TO BE SUPPLIED BY OTHERS.
 4) ALL FLANGED NOZZLE CONNECTIONS 6" DIA. OR LESS TO BE SUPPORTED WITH (4) GUSSETS EQUALLY SPACED @ 90° APART.
 5) DEMISTER PAD IS REMOVABLE FROM THE ACCESS DOOR.

APPROX. WEIGHT
 SHIPPING WT. = 2,000 LBS. / UNIT (N/D WATER)
 ONE (1) UNIT REQ'D. AS SHOWN

TAG #: TW-3502

FIELD FILE



06019
 CIE: ETHANOL
 Canton, Illinois
 04.10.07
 File: 17.1 TW3502
 018 007002

REV	BY	REASON	DATE
4	EN	REV. AS PER CUSTOMER MARKED PRINT 3/27/07	6/16/07
3	EN	REVISED LUGGER AND PLATFORM LOCATIONS	3/23/07
2	EN	MODIFIED PER CUSTOMER COMMENTS	3/5/07
1	EN	MODIFIED PER CUSTOMER COMMENTS	2/12/07

DRAWN BY: LW
 CHECKED BY: JL
 APPROVED BY: LP

DATE ISSUED:
 SCALE: N.T.S.

BUCON
 DUCON TECHNOLOGIES, INC.
 SERVING THE INDUSTRY SINCE 1987
 FARMINGDALE, NEW YORK 11735, U.S.A.
 (811) 884-1700 FAX: (811) 420-4885
 E-MAIL: www.bucon.com; Email: info@bucon.com

CLIENT: LURGI PSI, INC.
 PROJECT NAME: CENTRAL ILLINOIS ENERGY CANTON ILLINOIS
 TITLE: GENERAL ARRANGEMENT DUCON PACKED TOWER
 SIZE: 30
 DRAWING NUMBER: DC07-4956-2-01
 REVISION: 4

M:\Contractors\CONTRACT_2005\07-4956 LURGI PSI\CUSTOMER DRAWING\DC07-4956-2-01 REV. 4.dwg, 4/19/07, 1:40:03 PM